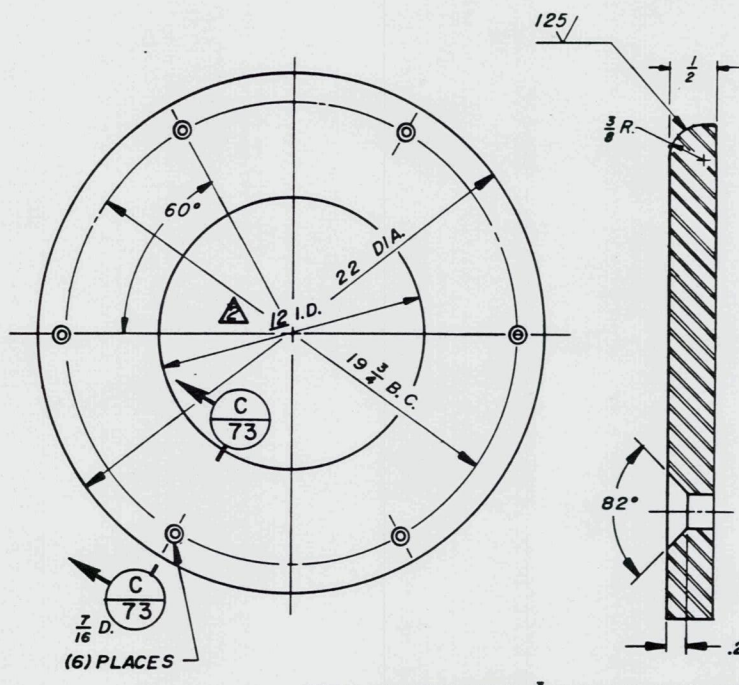
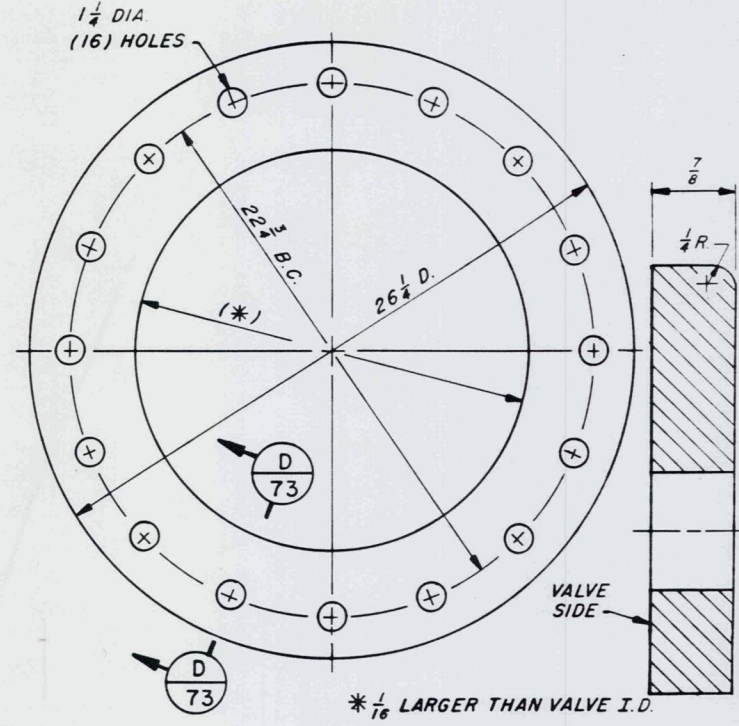


③ ORIFICE SUPPORT PLATE
ASTM A-36
SCALE: 3"=1'-0"



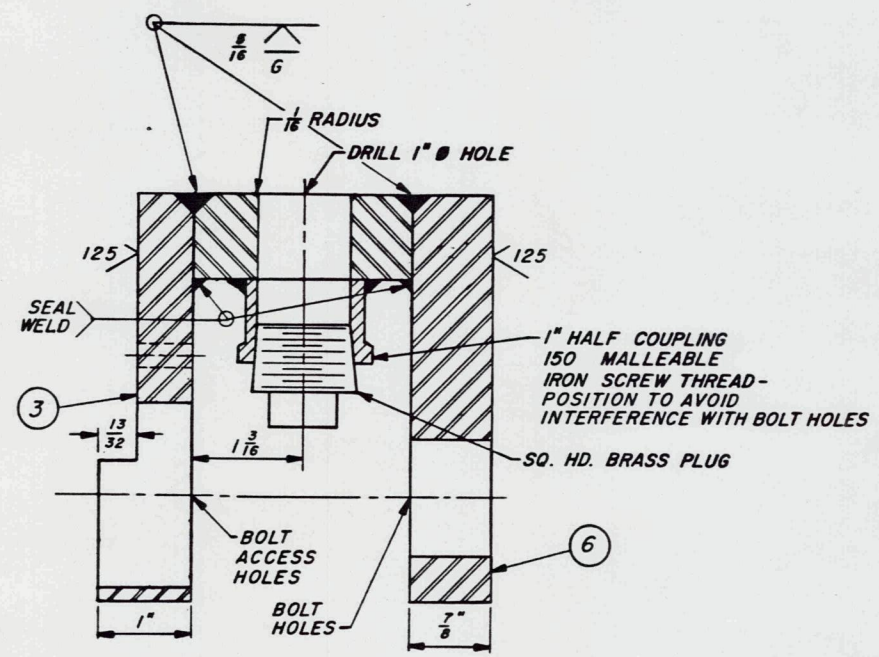
④ ORIFICE PLATE
ASTM A-36
SCALE: 3"=1'-0"



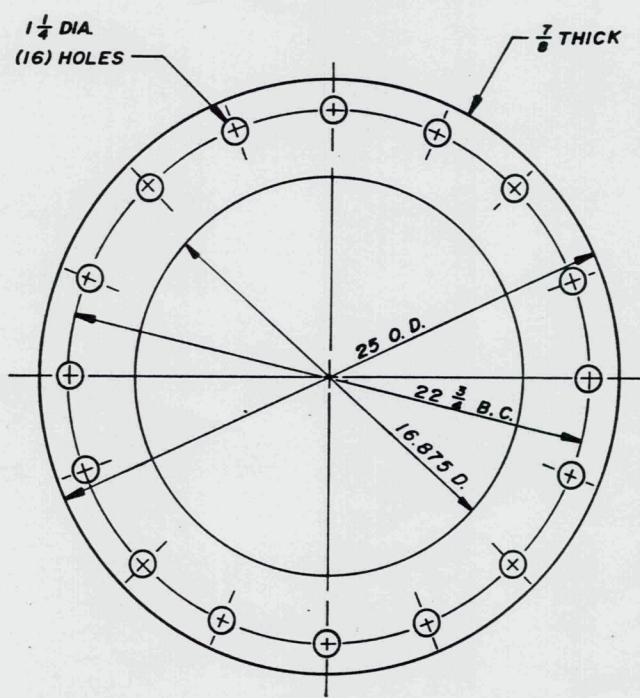
⑤ VALVE FLANGE
ASTM A-36
SCALE: 3"=1'-0"

SECTION D
SCALE: FULL 73

THE LIGHTWELL PIPE MAY BE INSTALLED FROM THE INTAKE BULKHEAD SLOT OR BY ROTARY DRILLING FROM THE INTAKE DECK. IN EITHER CASE, THE CONCRETE IS TO BE RESTORED, INCLUDING SOME DOWELS, TO THE SATISFACTION OF THE CONTRACTING OFFICER.



DETAIL B
SCALE: FULL 73



⑥ VALVE FLANGE
ASTM A-36
SCALE: 3"=1'-0"

- NOTES:
- NUMBERS IN CIRCLES (12) INDICATES EQUIPMENT LISTED ON DWG. 4/1
 - FISH MUST PASS THROUGH THE ORIFICE AND VALVE-MISALIGNED JOINTS OR SHARP EDGES ARE NOT ACCEPTABLE.
 - GALVANIZING SHALL BE IN ACCORDANCE WITH SPECIFICATIONS SECTION "METALWORK FABRICATION, MACHINE WORK, AND MISCELLANEOUS PROVISIONS".
 - PAINTING SHALL BE IN ACCORDANCE WITH SPECIFICATIONS SECTION "PAINTING, HYDRAULIC STRUCTURES AND APPURTENANT WORKS".

DETAIL A
SCALE: 2"=1'-0" 72

AS CONSTRUCTED
CONTRACT No. 84-C-0033

4	14 SEP 88	CHANGED NUMBER FROM JDF-3-1/9 TO JDP-2.0-3-4/2	RAM
3	5 AUG 87	AS CONSTRUCTED, REVISED ANCHOR LOCATION	RJS
2	24 FEB 84	CHANGED ORIFICE TO 12"	A.R.C.
1	15 NOV 83	CHANGED WELD A-4, CHANGED PIPE TO TUBE A-4	A.R.C.
REVISION	DATE	DESCRIPTION	BY
U. S. ARMY ENGINEER DIVISION, N. P. PORTLAND, OREGON			
DESIGNED BY	A.R.C.	JOHN DAY LOCK AND DAM	
DRAWN BY	TDR	COLUMBIA RIVER OREGON AND WASHINGTON	
CHECKED BY	C.W.F.	TRANSPORTATION CONDUIT & OUTFALL CHUTE	
PREPARED BY		MECHANICAL	
DATE		FINGERLING ORIFICE SYSTEM	
		VALVE ASSEMBLY	
APPROVED FOR DIV. ENGINEER	DATE	OCT 1983	
APPROVED BY		SCALE AS SHOWN	
		JDP-2.0-3-4/2	
DATE		SHEET	